

CITY LIVING NEW 1 & 2 BED APARTMENTS OFF PLAN FROM £75,250*

* 35% share of £205,000 total price.



Marlowe Place

MODERN LIVING IN CANTERBURY

Register your interest today
westkent.org/marloweplace

West
Kent

Marlowe Place

11 Dover Street, Canterbury, CT1 3HD



Property Overview

These beautifully designed one and two bedroom flats, and a spectacular two bedroom apartment, are located close to the city centre.

Oozing contemporary charm, yet traditionally designed to complement the conservation area they are located in, Marlowe Place is the perfect location for would-be city-dwellers.

Key Features

- Fitted kitchen with grey oak effect worktops
- Integrated fridge-freezer, dishwasher, washer-dryer, electric oven and ceramic hob and curved glass extractor
- Built in wardrobes
- Oak vinyl flooring to hallways, bathroom and kitchen, living areas
- Carpeted bedrooms
- Gas central heating with combination boiler
- 12 year new build property warranty
- Most properties include outdoor space



Marlowe Place

MODERN LIVING IN CANTERBURY

Marlowe Place is set in the Canterbury district, rich in arts and culture

Living in Canterbury

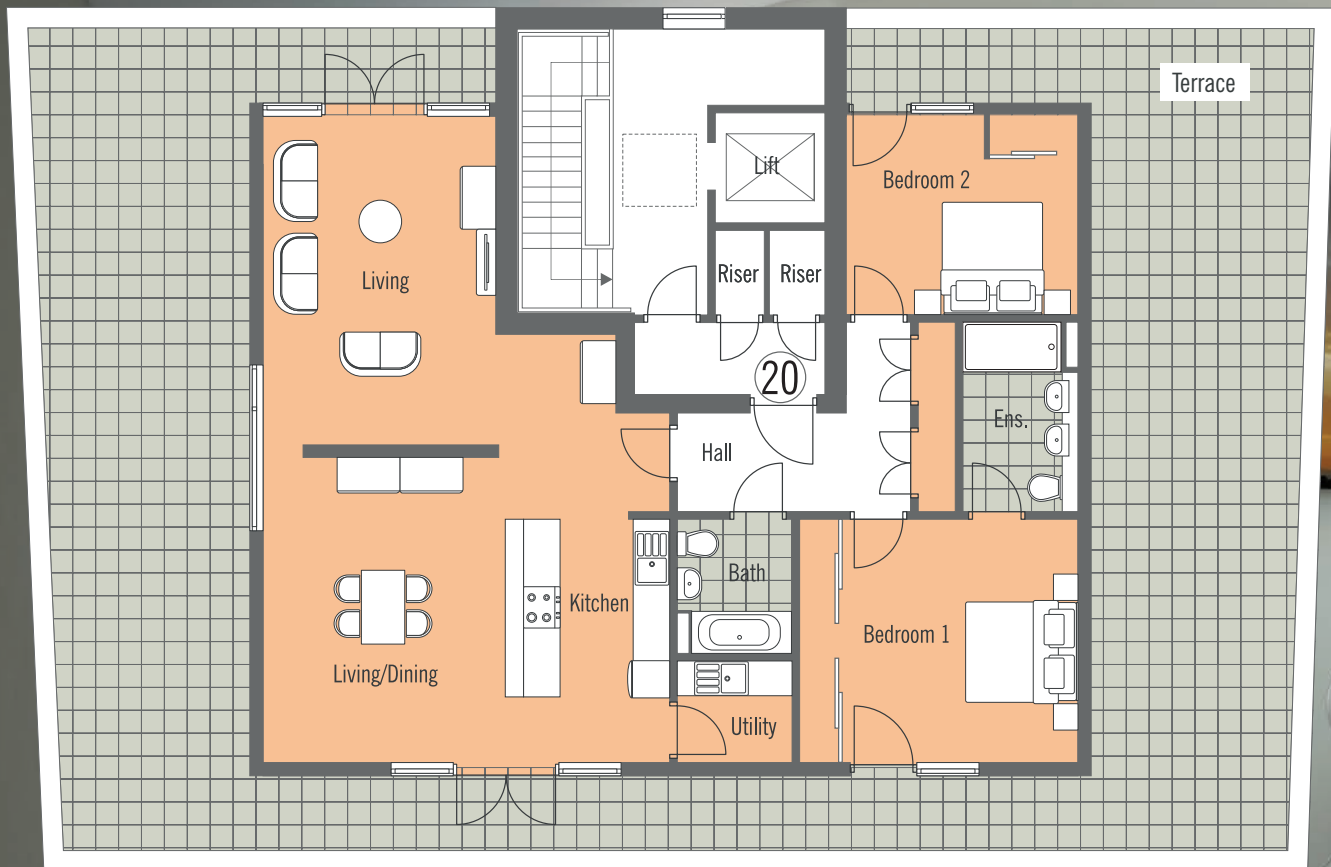
Canterbury city centre is crammed with historic sites and buildings and has an enviable mix of independent and larger shops. Most of the schools locally are rated good or above by Ofsted and there are colleges and the University of Kent all within walking distance.

From international festivals, a theatre and museums to independent galleries the Canterbury district is rich in arts and culture.

The city has great late night bars and a night club scene or for a quieter night there are a wide range of restaurants and bars within a short distance. It's also just a short drive to the coast.

West
Kent

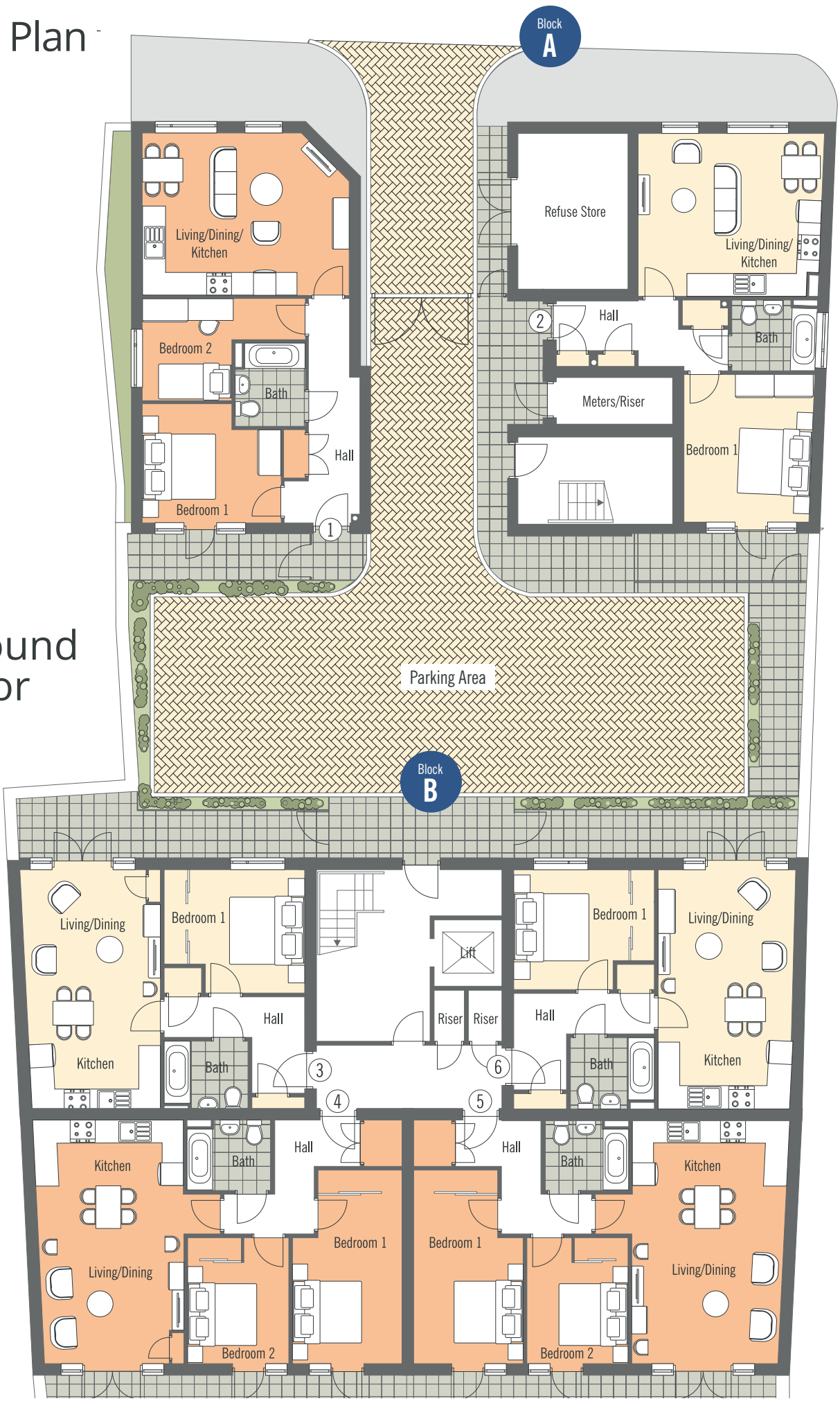
Block B - Plot 20 Third Floor





Site Plan

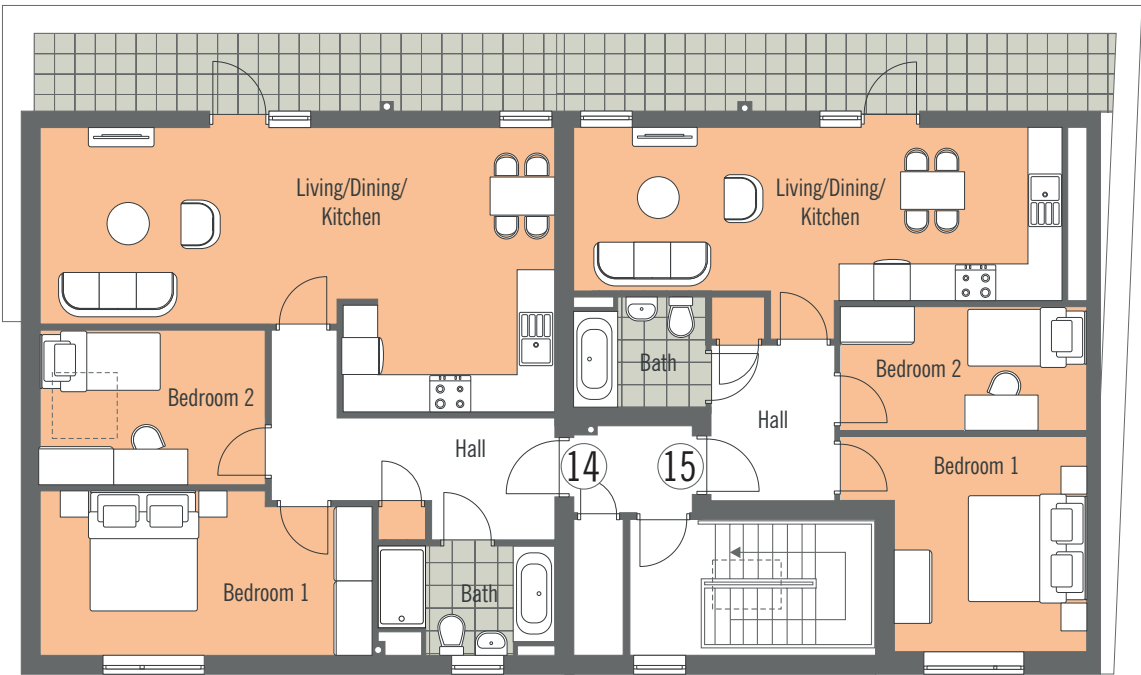
Ground Floor



Block A - Plot 7, 8 & 9 First Floor



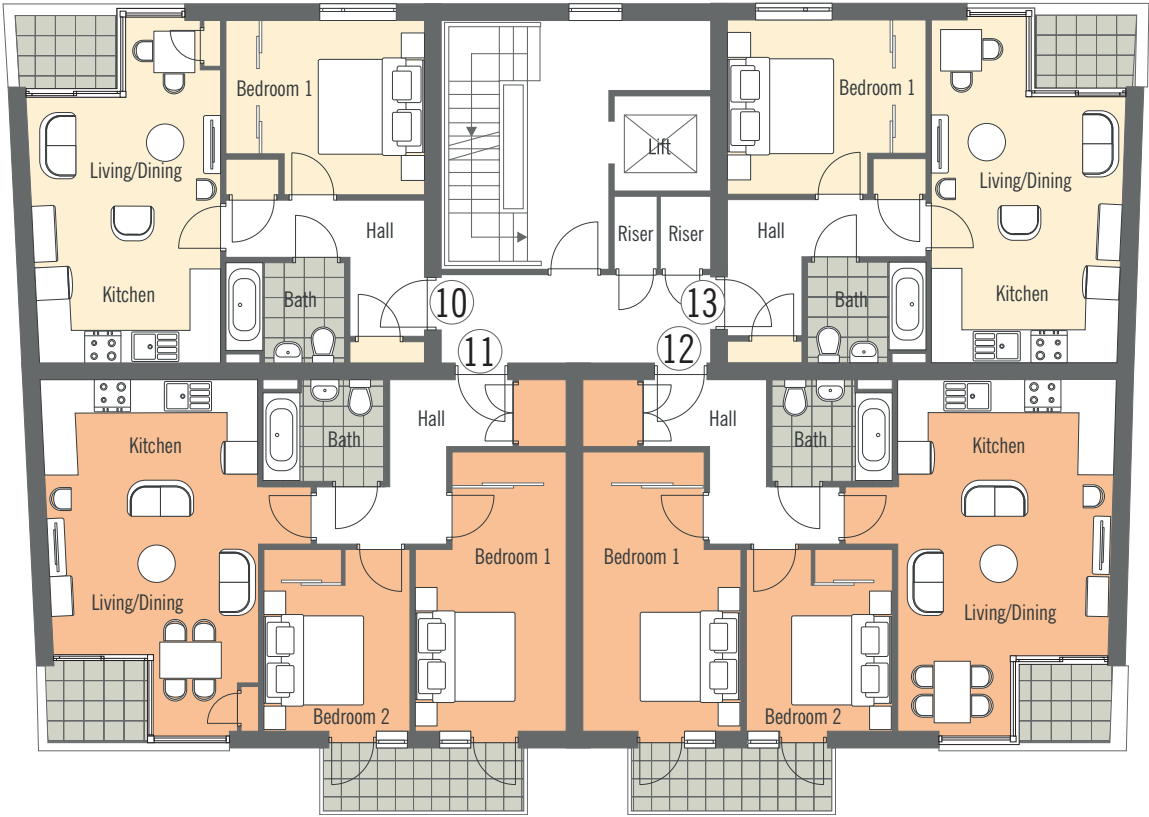
Block A - Plot 14 & 15 Second Floor



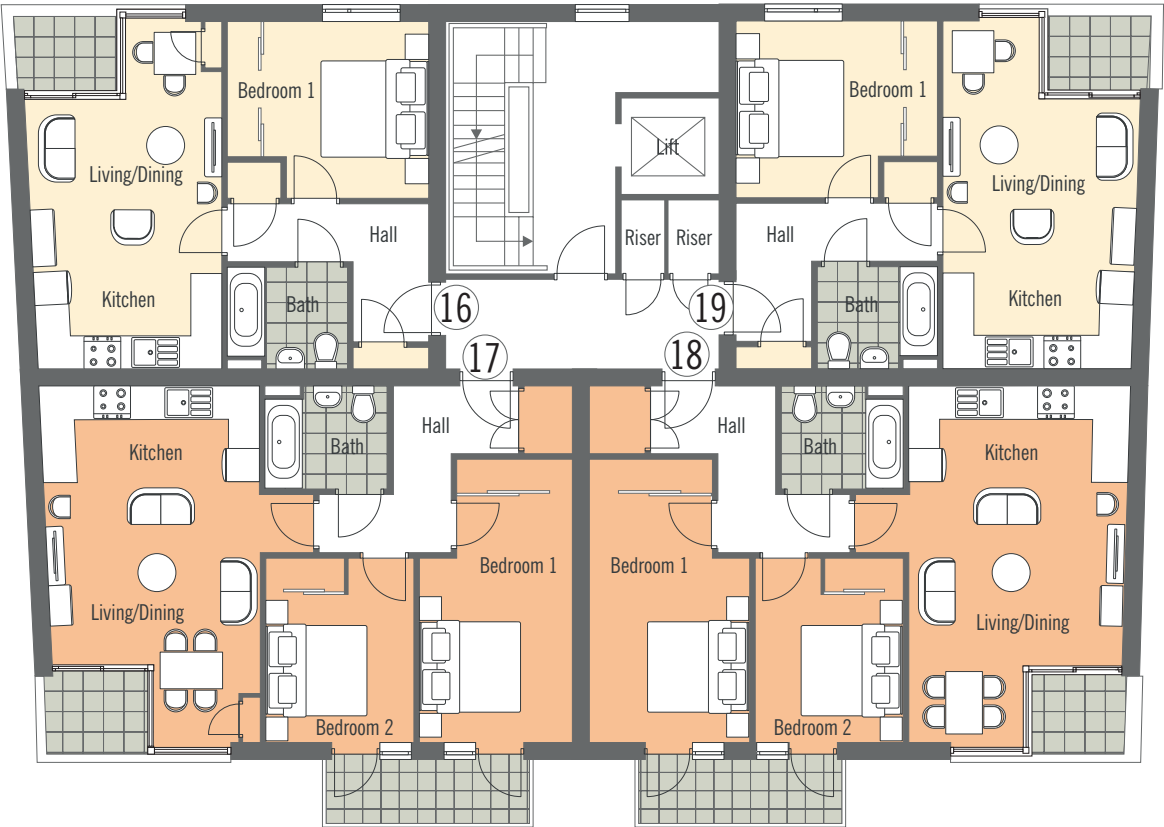
Key

1 Bedroom 2 Bedroom

Block B - Plot 10, 11, 12 & 13 First Floor



Block B - Plot 16, 17, 18 & 19 Second Floor



Key

- 1 Bedroom
- 2 Bedroom



Images are for visual purposes only and are subject to change.

West
Kent



Images are for visual purposes only and are subject to change.

Available properties

Unit	Block	Floor Level	Type	Private Amenity	Floor Area (m²)
1	A	Ground	2 bedroom flat	Patio	58
2	A	Ground	1 bedroom flat	Patio	49
3	B	Ground	1 bedroom flat	Patio	48
4	B	Ground	2 bedroom flat	Patio	70
5	B	Ground	2 bedroom flat	Patio	69
6	B	Ground	1 bedroom flat	Patio	54
7	A	First	2 bedroom flat	None	65
8	A	First	1 bedroom flat	None	43
9	A	First	2 bedroom flat	None	62
10	B	First	1 bedroom flat	Balcony	46
11	B	First	2 bedroom flat	Balcony	67
12	B	First	2 bedroom flat	Balcony	67
13	B	First	1 bedroom flat	Balcony	52
14	A	Second	2 bedroom flat	Terrace	77
15	A	Second	2 bedroom flat	Terrace	63
16	B	Second	1 bedroom flat	Balcony	46
17	B	Second	2 bedroom flat	Balcony	67
18	B	Second	2 bedroom flat	Balcony	67
19	B	Second	1 bedroom flat	Balcony	42
20	B	Third	2 bedroom flat	Terrace	126

Please register your interest on our website or by emailing sales@wkha.org.uk

Transport

Marlowe Place is located in the world famous city of Canterbury, with views of the cathedral. Its location near the channel ports and airports makes it perfect for anyone that travels for work, frequent fast trains to St Pancras take just 51 minutes.



Contact us

Opening times:

8.45am and 5.15pm
Monday to Thursday and between
8.45am and 4.45pm on Fridays.

Telephone: 01732 749400

Email: sales@wkha.org.uk

Address:

101 London Road
Sevenoaks
Kent
TN13 1AX

Find us online:

 /WestKentHA
 @West_Kent
 /1WestKent

 westkent.org/marloweplace

Marlowe Place
MODERN LIVING IN CANTERBURY

**West
Kent**