

Spires St Michaels, Tenterden, Kent TN30 6BA

emerald
as life changes



Welcome to *Spires, St Michaels, Tenterden*

Situated in the historic village of St Michaels, Tenterden, Spires offers 41 one and two bedroom homes specifically designed for people aged 55 and over.

Ideally placed for local shops and amenities, Spires is just under one and a half miles from the small bustling market town of Tenterden which boasts a wide variety of unique shops and boutiques, as well as high street chains.

A bus stop is situated right outside with regular services to Tenterden High Street, Ashford, Maidstone and outlying villages.

Every apartment has been fitted with high quality fixtures and fittings, with the two bedroom apartments providing flexible living accommodation for visiting relatives or carers.

The private apartments are designed for independent living with community facilities on offer when you want to use them. They include a restaurant, bar, a kiosk selling everyday essentials, a hair salon, and lounge. There is also a hobbies, games and computer room. Outside the flower and kitchen gardens offer a chance for residents to be involved or simply enjoy the beautiful landscaped gardens.

Spires has a dedicated management service and on site care team offering that little bit of extra care and support if you need it.

Apartment and facilities

- spacious living areas
- fully fitted modern kitchens
- bathrooms with level access showers
- assisted bathroom
- slip resistant flooring to kitchens and bathrooms
- fitted carpets throughout
- secure door entry and assistive technology
- private outdoor space
- carefully designed informal seating in the communal areas.

Spires also has a laundry room, guest suite, and scooter store.

Facilities include:

- restaurant and lounge
- bar and kiosk selling everyday items
- hair salon and beauty treatments
- hobbies, games and computer room
- landscaped, communal gardens.



*Every apartment
has been fitted
with high quality
fixtures and
fittings*

What about the costs?

The apartments are available for rent. The rental costs will vary according to your personal circumstances but will include:

- the cost of renting your individual apartment (You will need to pay one month's rent in advance when you move in).
- a service charge which covers costs such as maintenance and cleaning of the communal areas and facilities.
- the cost of your wellbeing and personal care charges that are made by KCC. (You will need to be financially assessed to work out how

much you can afford to pay towards your planned care and the Wellbeing Charge. Your contribution will be worked out by a KCC Financial Assessment Officer).

Rental and care costs vary according to your circumstances therefore we offer support and advice tailored to your financial situation. Ongoing budget and tenancy management support is also available as part of your tenancy with us.

Am I eligible?

You need to be:

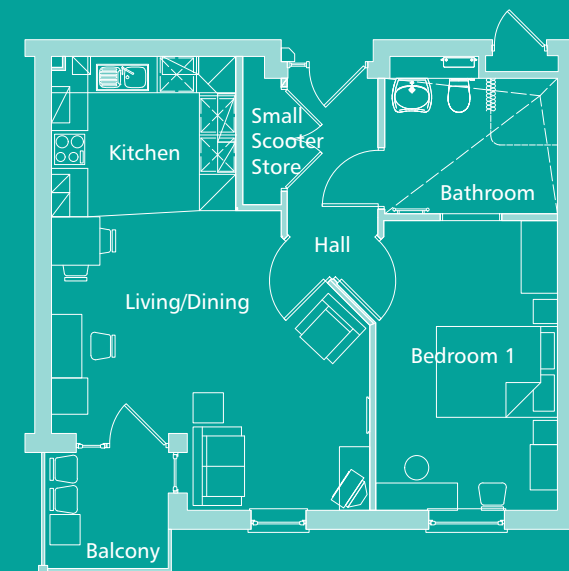
- aged 55 years or over*
- registered for housing with Ashford Borough Council and live in Kent.

* Please note that priority for housing will be given to those with an assessed social care need.

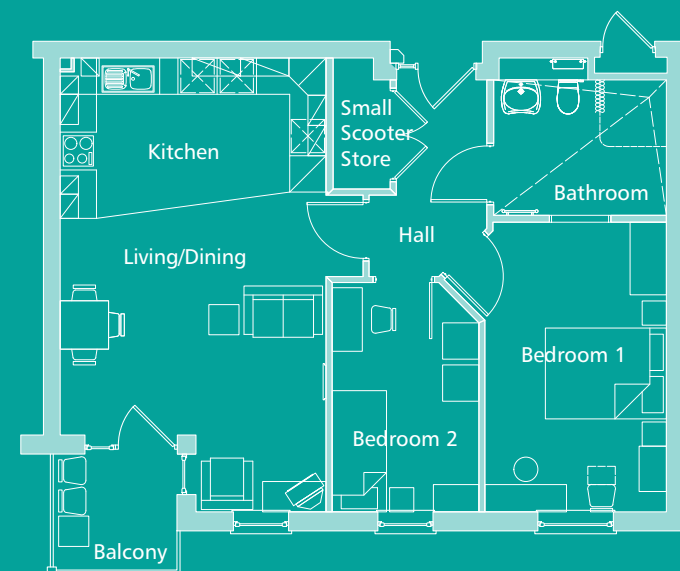
How to apply:

For further information or to apply please contact West Kent on **01732 749400**, email **enquiries@wkha.org.uk** or visit **westkent.org**

1 bed



2 bed



1 bed

Room sizes

	Metric	Imperial
Living/Dining room	5.2 x 4.7m	17'2" x 15'5"
Kitchen	3.0 x 2.4m	9'12" x 7'12"
Bedroom 1	3.0 x 4.8m	9'9" x 15'8"

2 bed

Room sizes

	Metric	Imperial
Living/Dining room	4.4 x 5.2m	14'4" x 17'1"
Kitchen	4.4 x 2.2m	14'4" x 7'3"
Bedroom 1	3.0 x 4.8m	9'9" x 15'8"
Bedroom 2	2.4 x 3.8m	7'11" x 12'4"

Images and sizes are for illustration only.



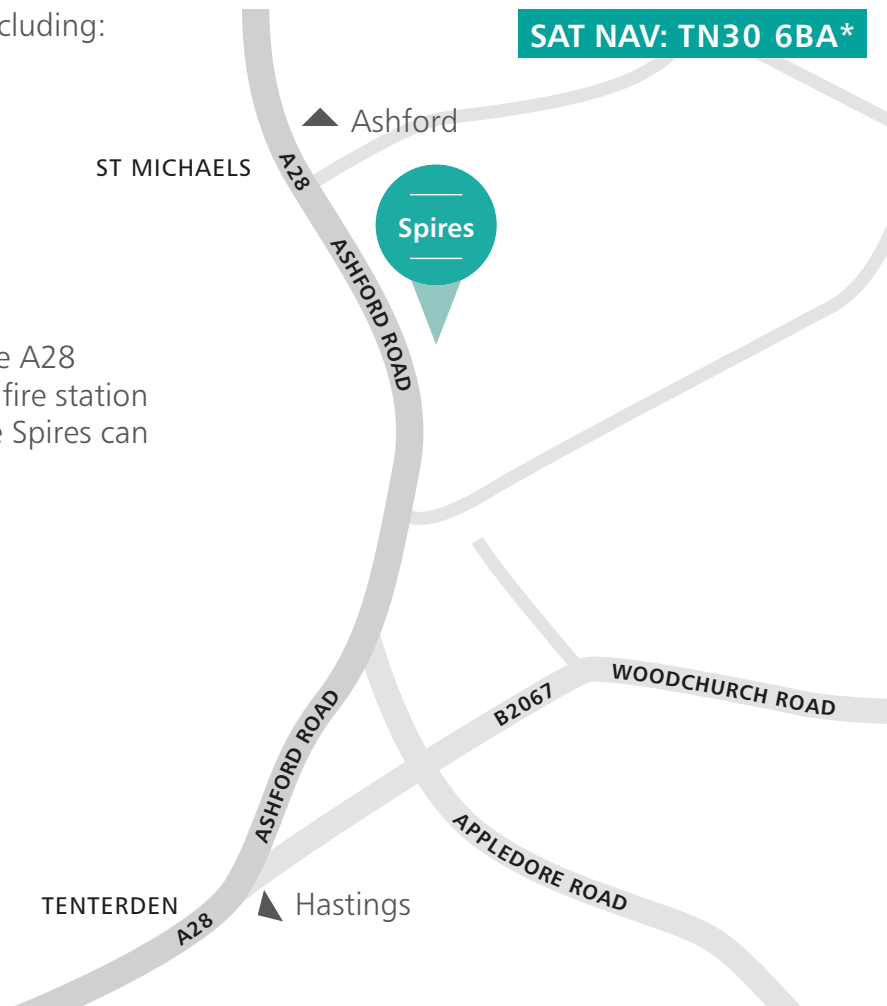
Local information

Tenterden offers many attractions including:

- shops
- museum and visitor attractions
- Kent and East Sussex Railway.

Directions

From Tenterden town centre take the A28 towards Ashford. Continue past the fire station and shops and after a short distance Spires can be found on the right hand side.



For further information
please contact West Kent:

01732 749400
enquiries@wkha.org.uk
westkent.org

WEST KENT



* Please note that postcodes may not be reliable for satellite navigation systems

October 2015, Version 1